
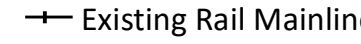
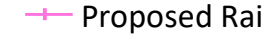
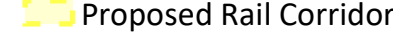
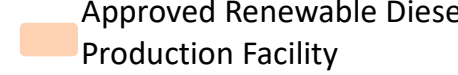

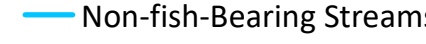



**NEXT RENEWABLE
FUELS INC.**
Columbia County, Oregon
Proposed Rail Branchline
Stream Data Map

LEGEND

-  Tax Lots
-  Existing Rail Mainline
-  Proposed Rail
-  Proposed Rail Corridor
-  Approved Renewable Diesel Production Facility
-  Fish-Bearing Streams
-  Non-fish-Bearing Streams
-  Ditches

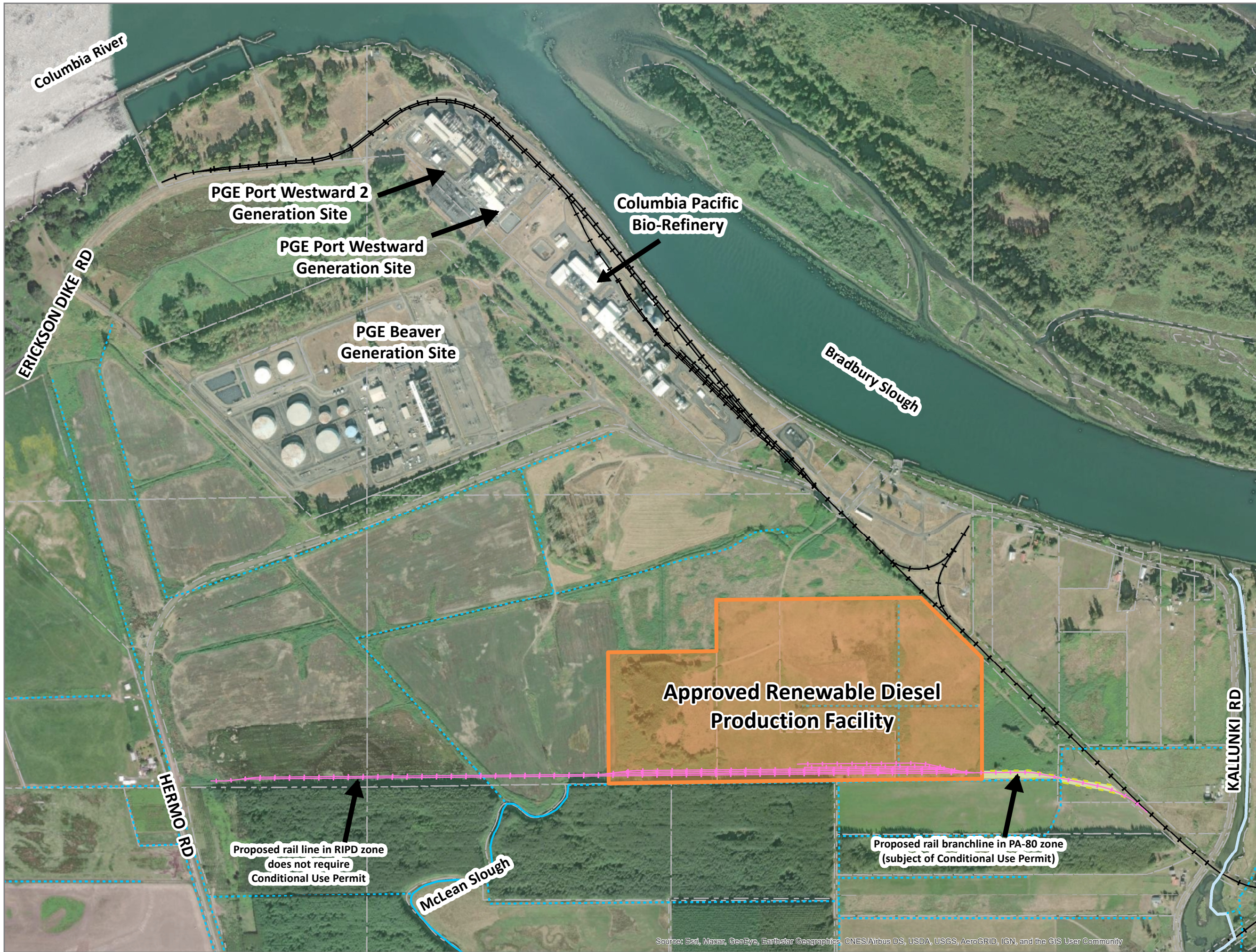
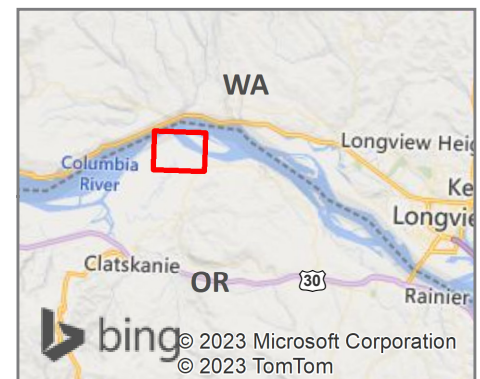


1 inch = 800 feet

SOURCE DATA:
Columbia County GIS Data

GEOGRAPHIC PROJECTION:
NAD 83 HARN, Oregon North
Lambert Conformal Conic

Date: 4/30/2023 Map Created By: BJV
File: CUP Stream Map4 Project No: 2200315.00



Source: Esri, Maxar, GeoEye, Earthstar Geographics, CNES/Airbus DS, USDA, USGS, AeroGRID, IGN, and the GIS User Community

MACKENZIE.

P 503.224.9560 • F 503.228.1285 • W MCKNZE.COM
RiverEast Center, 1515 SE Water Avenue, #100, Portland, OR 97214

Portland, Oregon • Vancouver, Washington • Seattle, Washington

© 2014 MACKENZIE ALL RIGHTS RESERVED